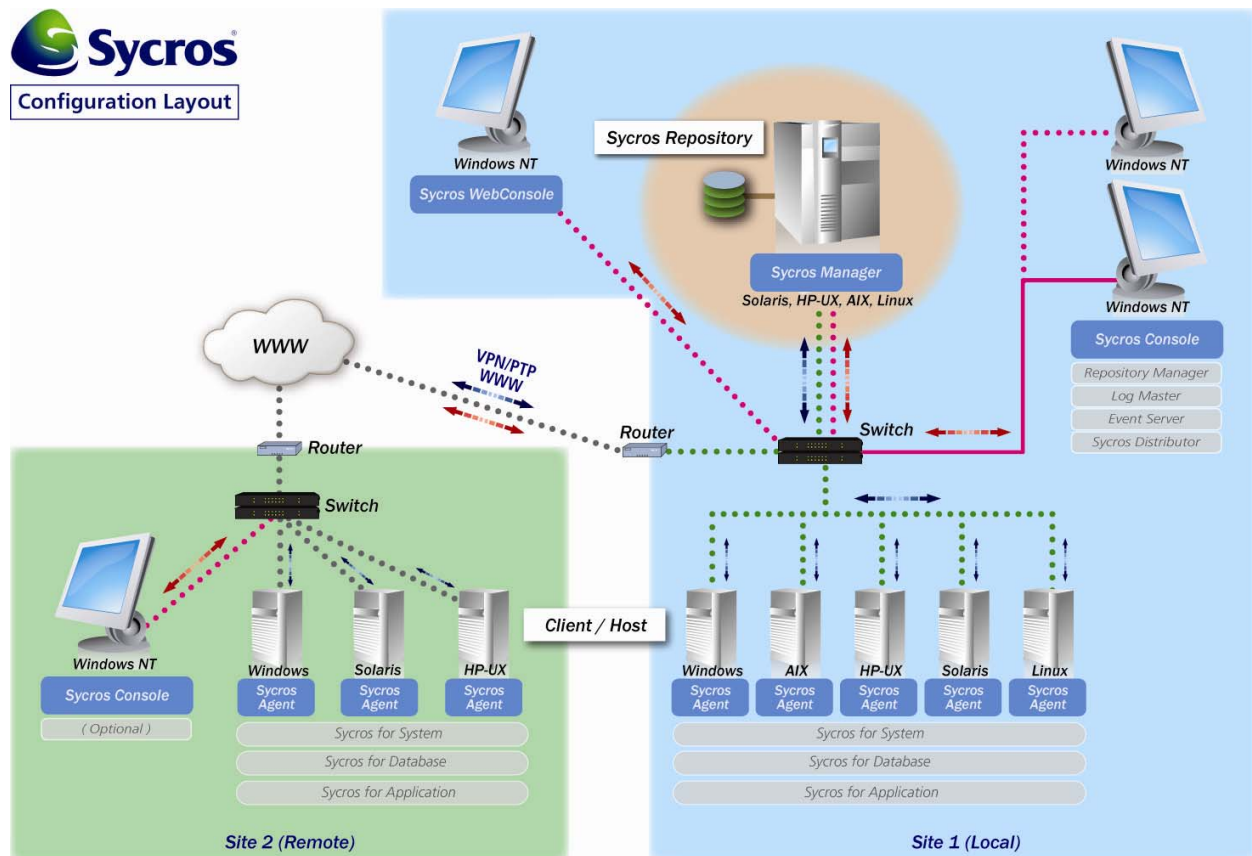


## Sycros Enterprise Management System in Brief

Sycros Enterprise Management System (Sycros) is the system management software for the servers. The servers include the IBM AIX, HP HP-UX, SUN Solaris, Linux, and Microsoft servers. Sycros monitors the system parameters, the utility tools, and the application programs. The information collected is used for the effective management of the computing resources. The features of the Sycros product provide affluent tools to monitor and manage the servers with ease of use. Sycros offers exceptional functionality for the simple and effective management of the complex distributed heterogeneous system in the enterprise IT environment.



### Features

- ❖ **Operations Management:** provides the user interface for monitoring and managing the computing resources.
  - The entire server resource can be viewed at the console.
  - The resources MAP and the top-down tree structure of the resources are displayed.
  - Flexible display formats and windows are provided.
  - Monitoring anywhere at anytime is offered through the Web monitoring feature.
- ❖ **Performance Management:** monitors the performance variables of the resource.
  - The performance parameters from multiple servers can be viewed in a table or graph,

and the range of the parameter value is being monitored.

- Default performance parameter collectors are defined for each server platforms, databases, and application program.
- More parameters can easily be added for monitoring.
- ❖ **Process Management:** monitors the status of processes running at the servers.
  - The number of active process is being monitored.
  - The process names to be monitored are recognized extensively with regular expression.
  - The numbers of active processes are being monitored.
  - The process may be started or killed.
- ❖ **Log Management:** monitors the log messages from the resources including the server, the utility tools, and application programs.
  - The text to be searched is monitored in the log files.
  - The log names to be monitored are recognized extensively with regular expression.
  - The text to be searched is defined extensively with regular expression.
  - The specific fields may be searched as well as the entire log message.
- ❖ **Problem Management:** reports the events from the resources to the administrator.
  - Any alert state defined by the performance management, the process management, and the log management triggers the problem event.
  - The problem events are displayed at the server and the upper group in the tree structure.
  - The alert states are defined as warning, critical, and fatal with multiple sets of monitoring time windows for a week.
  - The notification can be done with popup window, email, phone, and/or voice announcement.
- ❖ **Report Management:** creates the reports with the statistical data on the resources.
  - Flexible report generation is provided with the user selection of the parameters for the report, with the combination of text, table and graph, and with the conversion to MS Word and Excel file format.
  - Historical data is provided.
  - Web report feature is offered to generate the report anywhere at anytime.
- ❖ **Other features**
  - The files can be distributed and executed remotely.
  - The utility to back up the Sycros central database is provided.

## **Benefit**

- ❖ **Provide Convenience for IT managers.**
  - The entire resource status can be viewed at the central location.
  - The alert situation at the resources is automatically notified.
- ❖ **Increase Efficiency.**
  - Repeated procedure is minimized. The parameters to be monitored are defined for the host or the host group.



- The data is colorfully displayed in table or graph for better recognition.
- Systematic way to monitor and manage is provided.
- The report can be easily integrated into the comprehensive report with the conversion to MS Word and Excel.
- ❖ **Improve Effectiveness.**
  - Easy customization allows viewing of the previously un-monitored parameters.
  - Powerful log and process monitoring feature allows monitoring of the most of the third party programs.
  - The parameter values can be compared at one screen for the balance and improvement.
- ❖ **Satisfy the users.**
  - Better functionality is provided for the usage of the resources.
  - Problems are better diagnosed and resolved in a timely manner.
- ❖ **Save the cost.**
  - IT managers spend less time monitoring the resources. They can spend more time on the strategic issues for the business.
  - The utilization of the resources is improved
  - Less downtime and better tool for the user saves money for the company.
- ❖ **Other benefits.**
  - The knowledge for monitoring and managing the resources stay within the organization because the knowledge is built into the Sycros product.
  - The company knows clearly how the investment for the IT resource is utilized.
  - The historical statistical data can be used for the future investment decision.

### **Competitive Edge**

- Product is proven in the field.
- Functions are customer oriented.
- Advanced technology provides less burden to the system.
- Sycros owns the source and technology.
- Integration to the third party solution is easily implemented.
- Installation is simple.
- Learning and usage is easy.
- Price is very competitive.

### **Target Customers**

- Customer who has servers from IBM, HP, Sun and Microsoft.
- Customer who runs application programs on the multiple servers.
- Customer who runs multiple application programs on the servers.
- Customer who use utility tools on the servers.
- Customer who needs to monitor the customized application programs. The industry specific program is one of the examples.